

Guided Practice

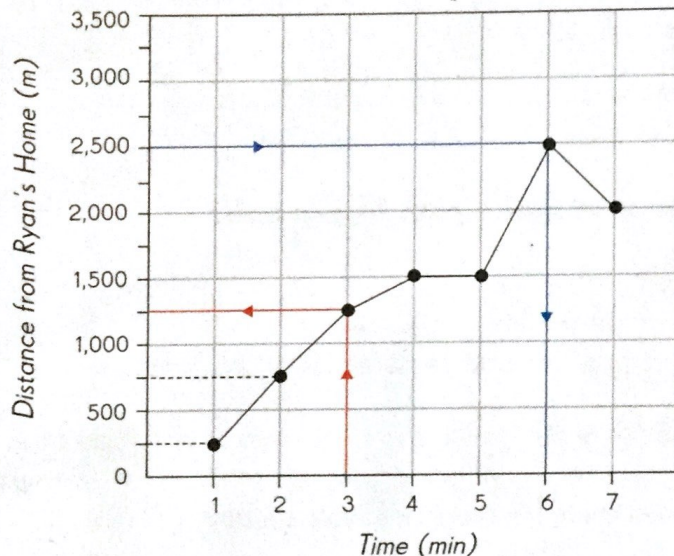
Complete. Use the data in the line graph.

The table and line graph show the distance from Ryan's home during the first seven minutes of a bus trip.

Distance from Ryan's Home

Time after Bus Trip Begins (min)	1	2	3	4	5	6	7
Distance from Ryan's Home (m)	250	750	1,250	1,500	1,500	2,500	2,000

Distance from Ryan's Home



- How far is Ryan from his home after 3 minutes on the bus? **1,250 m**
- After **6** minutes on the bus, Ryan is 2,500 meters from his home.
- The bus stopped at a bus stop between the **fourth** and **fifth** minute.
- What was the increase in distance from Ryan's home from the first to the third minute? **1,000 m**
- After how many minutes of its journey did the bus turn around and travel in the direction of Ryan's home? **6**
- During which 1-minute interval was the bus moving the fastest? **6**

Between the fifth and the sixth minute.